

## John James Audubon State Park Deer Hunt

December 1-3, 2017

**Sign in/out Location:** Sign in/out will be at the John James Audubon Park office (3100 U.S Highway 41 North, Henderson, KY 42419-0576)

### Sign in/out Requirements:

- All hunters must sign in at the park office prior to hunting on the day before the hunt between the hours of 12:00pm – 8:00pm (central time).
- Required documents:
  - Proof of Social Security or hunt confirmation number
  - valid Kentucky hunting license and deer permit
  - hunter education card or temporary hunter education exemption permit (if required through KDFWR regulation)
  - If a hunter has already taken two deer with the statewide deer permit, they must have a valid additional deer permit in possession while hunting (all harvested deer count towards statewide limit)
- All hunters must sign out at the park office when finished hunting, the bag limit is reached, or by 7:00pm (central time) on the last day of the hunt.

**Harvest Check Requirements:** Hunters must check harvested deer by calling (toll free) 1-800-CHK-GAME or 1-877-245-4263 from any touch-tone telephone. The state park will be listed under “county” and “public land hunting.” There is no manned check station, do not bring deer to the park office or museum!

**Cost:** Hunters must book lodging in one of the park cottages to be eligible for this hunt. Call (270) 826-2247 for more information and cottage rates. There is no restaurant facility at the park, though many restaurants are available in Henderson and Evansville, IN. Slots are non-transferrable.

**Bag Limit:** This park is located in a zone 2 county. All statewide zoning regulations apply. Hunters may take two (2) deer with valid hunting license and deer permit. Hunters in zone 2 counties may take an additional two (2) deer with a valid additional deer permit. A person may take no more than one (1) antlered deer per season.

**Method of Take:** modern gun

**Office Phone Number:** John James Audubon State Park – (270) 826-2247

**Notes:** Landowner license exemptions do not apply on this hunt. Hunters who fail to sign in or out (or who violate other hunt requirements) will be blocked from applying for any state park hunt next year.

## **Special Restrictions:**

Hunters must keep vehicle tag on dashboard for the duration of the hunt. One vehicle tag per drawn hunter will be provided at sign in.

Hunters may only clean deer at designated cleaning station (see map). Harvested animals may be field dressed but parts and pieces may not be left in open or mowed areas. Hunters may not use mechanisms to hang deer which damage trees.

Deer carcasses may be left in forested areas, out of sight of roads and public use areas. Do not leave carcasses behind lodging facilities, next to roads, or where other state park visitors may see them!

Four-wheelers, ATVs, and other utility vehicles are prohibited on park property. Hunters may use hand carts to hike harvested deer out from the field. Do not drive vehicles off maintained roads.

Hunters may not use tree stands except portable stands. Climbing spikes or other devices which nail or screw to the tree are prohibited. Tree stands may not be left unattended for more than 24 hours, and must be removed from park property at the end of the hunt.

Hunters may not discharge a firearm within 100 yards of maintained roads or buildings.

Hunters are required to get permission from surrounding landowners before crossing property boundaries to access park land or retrieve downed deer. Please respect the property rights of adjacent landowners and do not trespass!

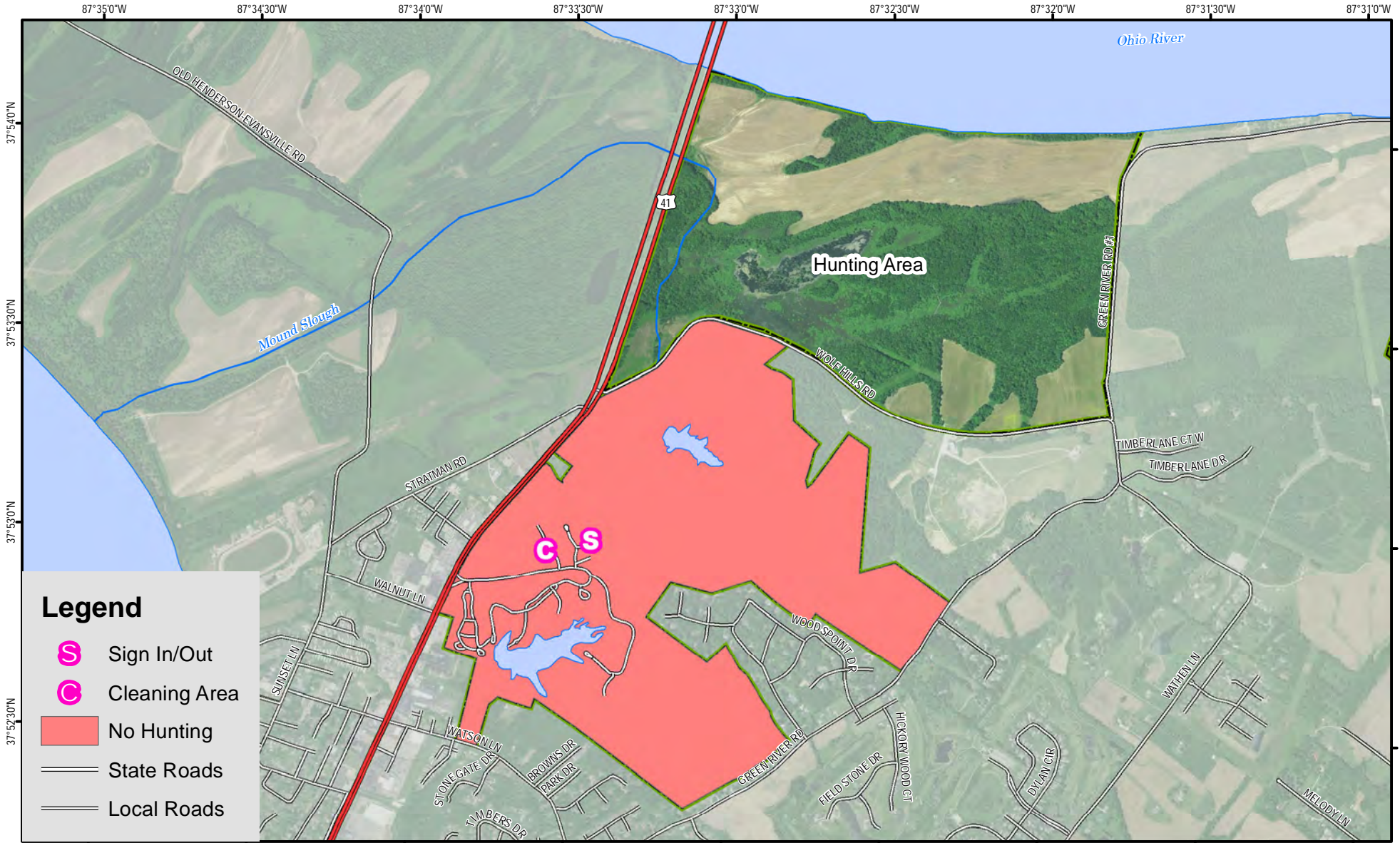
It is the responsibility of the hunter to stay within park boundaries and approved hunt areas! State park administrators will provide hunters with a map of park boundaries, including approved hunting areas.

Hunters may scout the area any time prior to the hunt that the park is open. The Department of Parks is not responsible for monitoring blinds or other equipment. Hunters may not “reserve” a hunting space or zone.

Please be courteous of other state park visitors! Non-hunters will be present on park during the course of the hunt. Be discreet and respectful of the sensitive nature of hunting. Please make every effort to conceal harvested animals during transport.

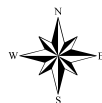
For more information on deer hunting and state park hunts, see the 2017-2018 Kentucky Hunting and Trapping Guide or visit [www.parks.ky.gov](http://www.parks.ky.gov).

# John James Audubon State Park Deer Hunt



## Legend

-  Sign In/Out
-  Cleaning Area
-  No Hunting
-  State Roads
-  Local Roads



0 0.25 0.5 0.75 1 Mile

Scale 1:25,000

### Note to Map Users

Map prepared by Kentucky Department of Fish & Wildlife Resources (KDFWR). Although KDFWR strives for accuracy, data used to create this map are from a variety of sources and dates; as such, KDFWR makes no representations regarding the accuracy or fitness for use of the information furnished herein.