

Kincaid Lake State Park
Quota Deer Hunts
ARCHERY AND CROSSBOW ONLY

December 14-17, 2017

December 21-24, 2017

Sign in/out Location: Hunters must sign in and out by signing a sheet when they arrive for the hunt and before leaving the park at the end of the hunt. The sign in/out sheet, information regarding the hunt, map of the park and hunting area, and vehicle tag will be available at a kiosk outside the Ranger Office, next to the golf pro shop (565 Kincaid Park Road, Falmouth, KY 41040-7619).

Sign in/out Requirements:

- All hunters must sign in on the day before the hunt between the hours of 12:00pm – 8:00pm (eastern standard time) or on days of the hunt between the hours of 5:30am- 8:00pm (eastern standard time).
- Hunters will be checked by Fish and Wildlife or Parks personnel during the course of the hunt, and should always carry the following documents:
 - Proof of Social Security or hunt confirmation number
 - valid Kentucky hunting license and deer permit
 - hunter education card or temporary hunter education exemption permit (if required through KDFWR regulation)
 - If a hunter has already taken two deer with the statewide deer permit, they must have a valid additional deer permit in possession while hunting
- All hunters must sign out on the sign in sheet when finished hunting, the bag limit is reached, or by 8:00pm (eastern standard time) on the final day of the hunt.

Harvest Check Requirements: Hunters must check harvested deer by calling (toll free) 1-800-CHK-GAME or 1-877-245-4263 from any touch-tone telephone. The state park will be listed under “county” and “public land hunting.” There is no manned check station.

Cost: none required beyond quota application fee with KDFWR.

Bag Limit: This is a quota hunt in a zone 1 county. With valid hunting license and deer permit, a person may take two (2) deer, only one of which may be antlered. A person may take no more than one antlered deer per season. Quota hunters in zone 1 counties may take unlimited antlerless animals with valid additional deer permits. Antlered deer count towards statewide limit.

Method of Take: Archery or Crossbow

Office Phone Number: Kincaid Lake State Park – (859) 654-3531

Notes: Landowner license exemptions do not apply on this hunt. Hunters who fail to sign in or out (or who violate other hunt requirements) will be blocked from applying for any quota hunt next year, and will lose accumulated preference points.

Special Restrictions:

Hunters must keep vehicle tag on dashboard for the duration of the hunt. One vehicle tag per drawn hunter will be provided at the sign in kiosk.

Harvested animals may be field dressed but parts and pieces may not be left in open or mowed areas. Hunters may not use mechanisms to hang deer which damage trees.

Deer carcasses may be left in forested areas, out of sight of roads and public use areas. Do not leave carcasses in campground, behind park facilities, next to roads, or where other state park visitors may see them!

Four-wheelers, ATVs, and other utility vehicles are prohibited on park property. Hunters may use hand carts to hike harvested deer out from the field. Do not drive vehicles off maintained roads.

Hunters may not use tree stands except portable stands. Climbing spikes or other devices which nail or screw to the tree are prohibited. Tree stands may not be left unattended for more than 24 hours, and must be removed from park property at the end of the hunt.

Hunters may not discharge a firearm within 100 yards of maintained roads or buildings.

Hunters are required to get permission from surrounding landowners before crossing property boundaries to access park land or retrieve downed deer. Please respect the property rights of adjacent landowners and do not trespass!

It is the responsibility of the hunter to stay within park boundaries and approved hunt areas! State park administrators will provide hunters with a map of park boundaries, including approved hunting areas.

Hunters may scout the area any time prior to the hunt that the park is open. The Department of Parks is not responsible for monitoring blinds or other equipment. Hunters may not “reserve” a hunting space or zone.

Please be courteous of other state park visitors! Be discreet and respectful of the sensitive nature of hunting. Please make every effort to conceal harvested animals during transport.

For more information on deer hunting, state park hunts, and quota deer hunt rules, see pages 24-27 of the 2017-2018 Kentucky Hunting and Trapping Guide.

More quota hunt information is available at <http://fw.ky.gov/Hunt/Pages/Quota-Hunts.aspx>

Kincaid Lake State Park Quota Deer Hunts

84°18'0"W

84°17'30"W

84°17'0"W

84°16'30"W

Legend

Sign In/Out

Fishing Access Sites

Any Boat

Small Boat Only

State Roads

Local Roads

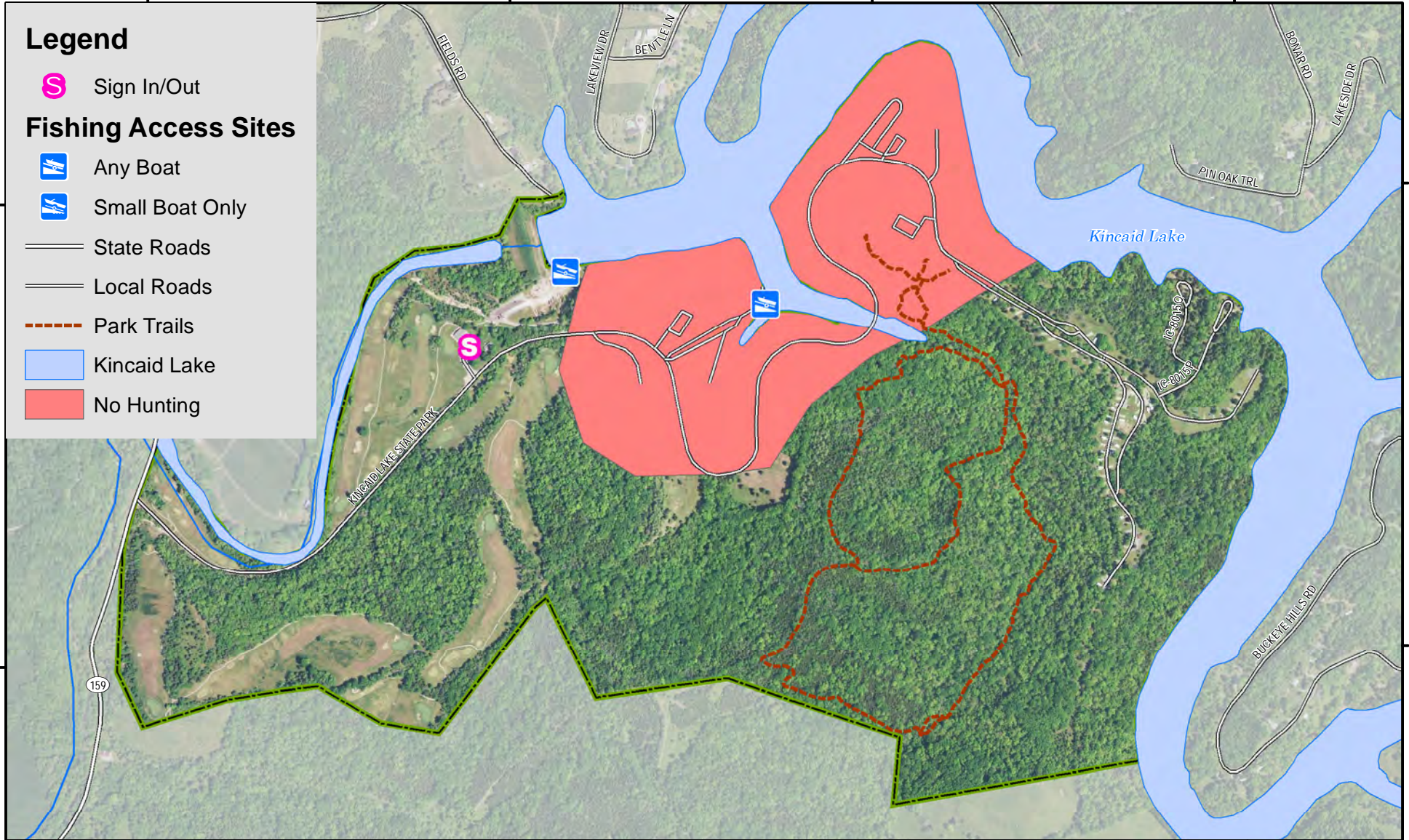
Park Trails

Kincaid Lake

No Hunting

38°43'30"N

38°43'0"N

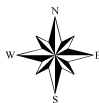


0 0.25 0.5 0.75 1 Mile

Note to Map Users

Scale 1:11,000

Publication Date: 9/1/2017



Map prepared by Kentucky Department of Fish & Wildlife Resources (KDFWR). Although KDFWR strives for accuracy, data used to create this map are from a variety of sources and dates; as such, KDFWR makes no representations regarding the accuracy or fitness for use of the information furnished herein.