

CASCADE CAVE

(TICKET SALES STOP 15 MINUTES PRIOR TO EACH TOUR TIME.)

ALL CASCADE CAVE TOUR TICKET SALES STOP 15 MINUTES PRIOR TO TOUR AT WELCOME CENTER.

ALL CASCADE CAVE TOURS STARTS PROMPTLY FROM CASCADE CAVE AREA PARKING LOT.

ALL CASCADE CAVE TOURS REQUIRE A SHORT DRIVE. TRANSPORTATION IS NOT PROVIDED.

Cascade Cave is one of the largest of over 200 caves in Carter County and is noted for its large chambers and numerous cave formations. Set your sights on the reflecting pool in the Lake Room, and the geologic diversity of the Cathedral Room. Finally entice yourself with our majestic 30-foot high underground waterfall.

Tours available year-round.

Mon thru Fri : 10:30 a.m., 2:30 p.m.

Saturday: 10:30 a.m., 12 p.m., 1:30 p.m.,
2:30 p.m., 4 p.m.

Sunday: 10:30 a.m., 1 p.m., 2:30 p.m., 4 p.m.

Dress For Weather Elements Outside

WALKING DISTANCE: 3/4 mile w/225 stair steps

DURATION: About 75 minutes

TEMPERATURE: 30-50 degrees (variable)

ADMISSION: \$10.00—age 13 & up
\$6.00—age 3 - 12
FREE—age 2 & under

X-CAVE

(WE RECOMMEND PURCHASING TICKETS AT LEAST 15 MINUTES PRIOR TO TOUR TIMES.)

X-CAVE STARTS PROMPTLY IN FRONT OF THE WELCOME CENTER AND IS WITHIN WALKING DISTANCE OF THE WELCOME CENTER.

X-Cave has two vertical joint passages that meander through a large layer of limestone, putting you up-close to beautiful cave formations. Features include turkey rock, the pipe organ, and the giant column which is the largest cave formation found at the park. Be aware of your surroundings and you will discover how this cave became known as “X-Cave.”

Tours available year-round.

Mon thru Fri: 1:00 p.m., 4:30 p.m.

Saturday: 10 a.m., 11:30 a.m., 1:30 p.m. 3 p.m.,
4:30 p.m.

Sunday: 10 a.m., 11:30 a.m., 1:30 p.m. 3 p.m.,
4:30 p.m.

Dress For Weather Elements Outside

WALKING DISTANCE: About 1/4 mile

DURATION: About 45 minutes

TEMPERATURE: 30 - 50 degrees (variable)

DIFFICULTY: Includes 75 stair steps through narrow passages; some stooping

ADMISSION: \$8.00—age 13 & up
\$5.00—age 3 - 12
FREE—age 2 & under

UPCOMING EVENTS

November 4 & 5, 2016: Murder Mystery Weekend

January 25-28, 2018: Winter Adventure Weekend

April 1, 2017: Mine Collector Show

April 15-16, 2017: Easter Weekend

April 21-22, 2017: Wildflower Pilgrimage

April 28-30, 2017: Campers Appreciation Weekend

May 6, 2017: Smoky Bridge On-Rope Adventure

June 19 & July 10 & July 7: Beginner Rock Climbing

June 26, July 17, August 4, Natural Bridge on Rappel

July 24-30: Pioneer Life Week

September 6-9: Fraley Festival

October 6,7,13,14,20,21: Haunted Trail

October 27-28: Halloween Campout

November 3 & 4: Murder Mystery Weekend

2017 Cave in Movie Dates : May 28, June 17, July 8,
August 12, September 3, October 28.

For more information on any of these events
or for reservations, call us at
1-800-325-0059.

Follow us on Facebook, Twitter and Instagram or
join our event e-mail list and get up-to-date
information on Carter Caves State Resort Park
events & news. Drop your email address off at
the lodge, welcome center, or campground to
get signed up today!

1792 {225} 2017
YEARS OF KENTUCKY



White-Nose Syndrome & Cave Tours

White-nose Syndrome (WNS) is a disease that is killing 70-100% of hibernating bats in infected caves. WNS does not have any effect on humans, livestock or pets. WNS was found February 2013 in some of the park caves.

HOW YOU CAN HELP

Do not wear the shoes, clothing, or carry objects that you had with you while on a cave tour at Carter Caves into another cave system outside of Carter Caves area.

PROHIBITED ON CAVE TOURS

Because of the possibility of White-nose Syndrome contamination, the following are **prohibited on cave tours**:

- Camera bags, tripods, strollers, backpacks, luggage, PETS, BAGS of **any** type, including purses, fanny packs, diaper bags, camera cases, etc. Sandals/flip-flops, etc. Please wear appropriate shoes that cover the entire foot for safety.
- Bags containing necessary medical supplies are permitted.

REQUIRED PARTICIPANT DECONTAMINATION PROTOCOL

All cave touring participants at Carter Caves State Resort Park will be required to walk on bio-mats after exiting the cave tour. This process will require each individual to walk across the length of an outdoor carpet and across a bio mat containing water and possibly Lysol IC mixture. This process has been proven to help prevent the spread of spores. **NOTE: Please review these procedures before you purchase any cave tour tickets, as refunds cannot be issued at the Welcome Center.** Thank you for your assistance with these procedures.

DIRECTIONS TO CASCADE CAVE

Cascade Cave is approximately 3.4 miles from the Welcome Center. Turn left out of the main Welcome Center parking lot and head back to the entrance of the park; turn right at the first stop sign onto Route 182; travel approximately 1.6 miles on Route 182, turn right onto Route 209 at the top of the hill. Cascade Cave parking lot is approximately 0.6 miles on the left.

- Tours are led by trained guides
- Questions are encouraged from tour participants
- Comfortable walking shoes with tread soles are encouraged. Some surfaces may be wet/slick

Large groups can also call ahead of time and schedule private tours of the commercial walking cave tours. Private Wild Cave Tours are available for groups of 10+ or for a minimum of \$300. We need several weeks notice to make arrangements for any private tours.

**CAVERS CREED:
TAKE NOTHING BUT PICTURES
LEAVE NOTHING BUT CAREFULLY PLACED FOOTPRINTS
KILL NOTHING BUT TIME**



Visit us on the web!



Like us on Facebook

CARTER CAVES STATE RESORT PARK
344 CAVELAND DRIVE, OLIVE HILL, KY 41164
(606) 286-4411
PARKS.KY.GOV



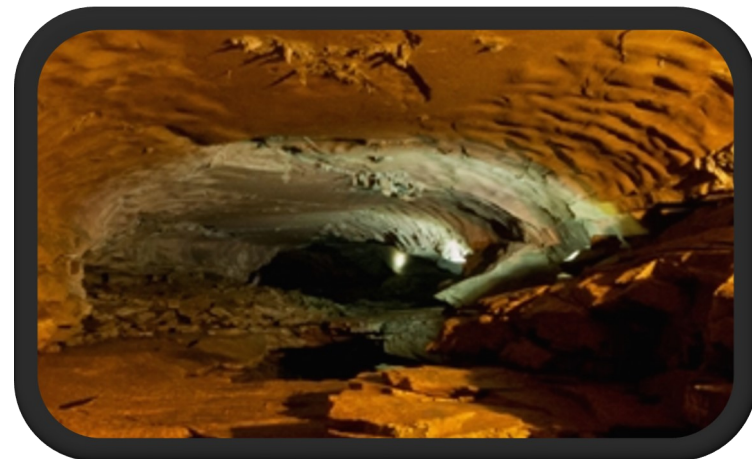
#BestKeptSecret



CARTER CAVES STATE RESORT PARK

CAVE TOURS

March 25 — May 26, 2017



TICKETS ARE SOLD AT THE WELCOME CENTER.

Founded in 1946, Carter Caves State Resort Park is home to one of the largest collections of natural cave systems. Many of these caves are open for tours at various times throughout the year. Cascade Cave and X-Cave are the only caves open to the public year round. In the summer months Bat Cave and Saltpetre Cave are open for walking and crawling tours.

TOUR SCHEDULE SUBJECT TO CHANGE
WITHOUT NOTICE.

