

## Jenny Wiley State Resort Park

### Deer Hunt

#### MOBILITY IMPAIRED ONLY

January 5-6, 2019

**How to apply:** This hunt is limited to the first fifteen (15) mobility impaired hunters who sign in at the park the day before the hunt. Hunters must meet mobility-impaired eligibility requirements outlined in the Kentucky Hunting and Trapping Guide.

**Sign in/out Location:** Initial sign in will be at the Jenny Wiley State Resort Park Ranger Station (75 Theatre Court, Prestonsburg, KY 41653-7714). Daily sign ins and sign out will be at the Pines Building located at the entrance to the Jenny Wiley Campground.

#### Sign in/out Requirements:

- All hunters must sign in at the Ranger Station prior to hunting on the day before the hunt between the hours of 8:00am – 4:00pm (eastern standard time). Each hunter must also sign in each day of the hunt at the Pines Building between the hours of 8:30am-4:00pm (eastern standard time).
- Hunting zones will be assigned to each hunter at sign in.
- Required documents:
  - Proof of Social Security or hunt confirmation number
  - Mobility-impaired document signed by physician
  - valid Kentucky hunting license and deer permit
  - hunter education card or temporary hunter education exemption permit (if required through KDFWR regulation)
  - If a hunter has already taken four deer with the statewide deer permit, they must have a valid additional deer permit in possession while hunting (all harvested deer count towards statewide limit)
- All hunters must sign out at the Pines Building when finished hunting, the bag limit is reached, or by 8:00pm (eastern standard time) on the last day of the hunt.

**Harvest Check Requirements:** Hunters must check harvested deer by calling (toll free) 1-800-CHK-GAME or 1-877-245-4263 from any touch-tone telephone. The state park will be listed under “county” and “public land hunting.” There is no manned check station!

**Cost:** None. Lodging and restaurant services available. Call (606) 889 - 1790 for more information, room rates, and to reserve a room.

**Bag Limit:** The bag limit for this hunt is two (2) deer, only one of which may be antlered. A person may take no more than one (1) antlered deer per season.

**Method of Take:** modern gun

**Office Phone Number:** Jenny Wiley State Resort Park – (606) 889 - 1790

**Notes:** Landowner license exemptions do not apply on this hunt. Hunters who fail to sign in or out (or who violate other hunt requirements) will be blocked from applying for any state park hunt next year.

**Special Restrictions:**

Hunters must keep vehicle tag on dashboard for the duration of the hunt. One vehicle tag per drawn hunter will be provided at sign in.

Harvested animals may be field dressed but parts and pieces may not be left in open or mowed areas. Hunters may not use mechanisms to hang deer which damage trees.

Deer carcasses may be left in forested areas, out of sight of roads and public use areas. Do not leave carcasses behind park facilities, in campground, next to roads, or where other state park visitors may see them!

Four-wheelers, ATVs, and other utility vehicles are prohibited on park property. Hunters may use hand carts to hike harvested deer out from the field. Do not drive vehicles off maintained roads.

Hunters may not use tree stands except portable stands. Climbing spikes or other devices which nail or screw to the tree are prohibited. Tree stands may not be left unattended for more than 24 hours, and must be removed from park property at the end of the hunt.

Hunters may not discharge a firearm within 100 yards of maintained roads or buildings. Hunters may not hunt or discharge a firearm around any lodging facility or area deemed off limits by park personnel. This includes but not limited to main lodge facility, lodge rooms, cottages, or meeting facilities.

Hunters are required to get permission from surrounding landowners before crossing property boundaries to access park land or retrieve downed deer. Please respect the property rights of adjacent landowners and do not trespass!

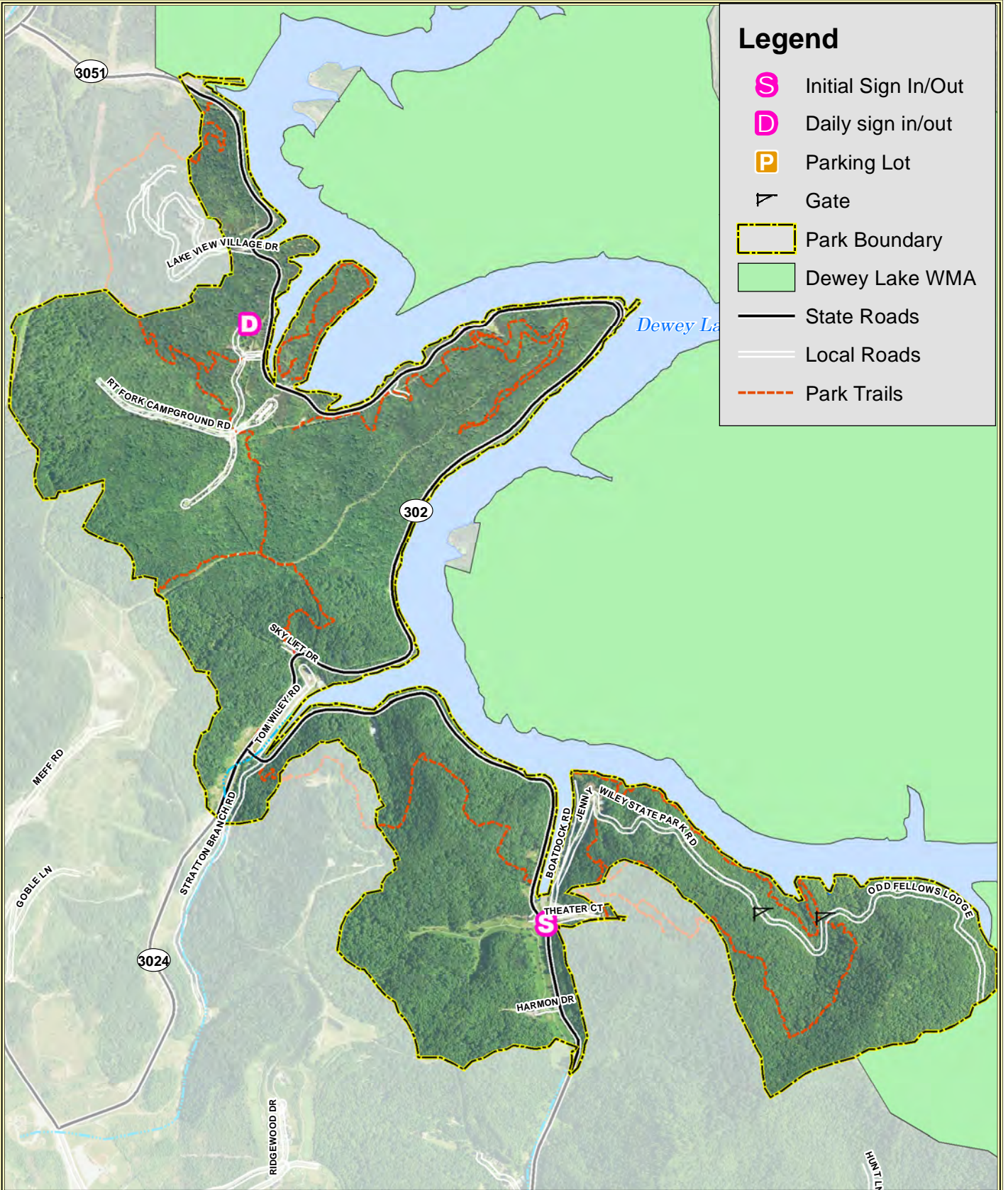
It is the responsibility of the hunter to stay within park boundaries and approved hunt areas! State park administrators will provide hunters with a map of park boundaries, including approved hunting areas.

Hunters may scout the area any time prior to the hunt that the park is open. The Department of Parks is not responsible for monitoring blinds or other equipment. Hunters may not “reserve” a hunting space or zone.

Please be courteous of other state park visitors! Non-hunters may be present on park during the course of the hunt. Be discreet and respectful of the sensitive nature of hunting. Please make every effort to conceal harvested animals during transport.

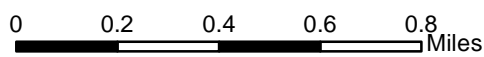
For more information on deer hunting and state park hunts, see the 2017-2018 Kentucky Hunting and Trapping Guide or visit [www.parks.ky.gov](http://www.parks.ky.gov).

# Jenny Wiley State Resort Park Deer Hunt for Mobility-Impaired Hunters



## Legend

- S Initial Sign In/Out
- D Daily sign in/out
- P Parking Lot
- Gate
- Park Boundary
- Dewey Lake WMA
- State Roads
- Local Roads
- Park Trails



1:24,000

Publication Date: 9/14/2017  
Imagery from Farm Service Agency 2016